



Product features

The valve flows the fluid in one direction. In the opposite case, it is closed without leaking. The control piston can push the check valve out and create a countercurrent flow. The valve is usually used to protect the pressure of components.

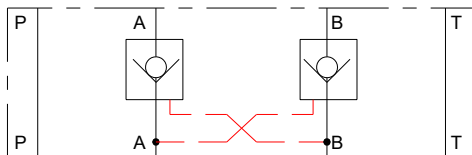
Model Code

Size	
6	NG6
10	NG10
Pilot operated	
P	Pilot operated
0	not pilot operated
Open pressure	
2.5	2.5 Bar
Function	
AB	Port A & B
A	Port A
B	Port B
Seals	
F	FPM
N	NBR
Series	
X	Version number

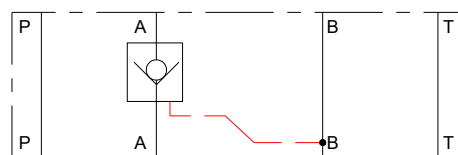
QC - [] - P - 2.5 - [] - [] - X

Graphic symbol NG6 / NG10

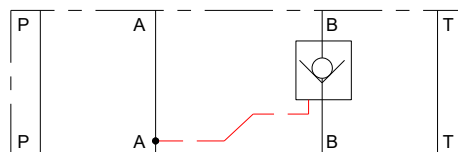
AB



A



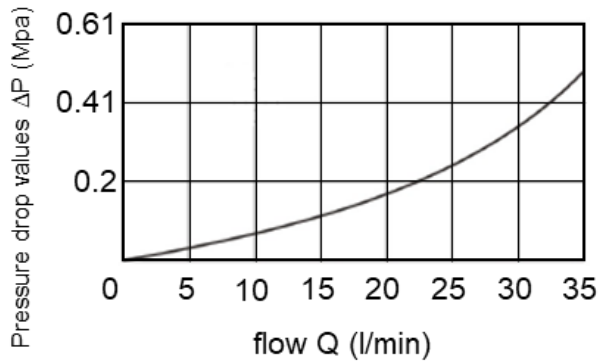
B



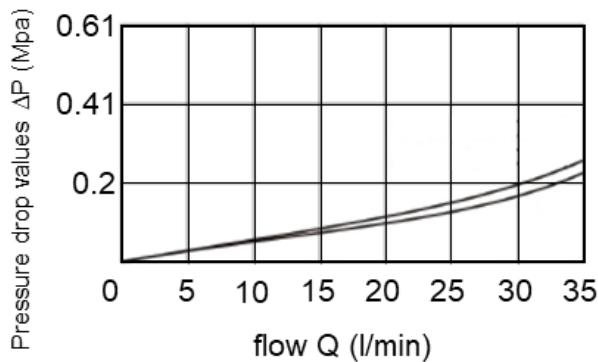
Technical data NG6

Size	The maximum pressure [Bar]	The maximum flow [l/min]	Weight [kg]
6	210	35	1.1

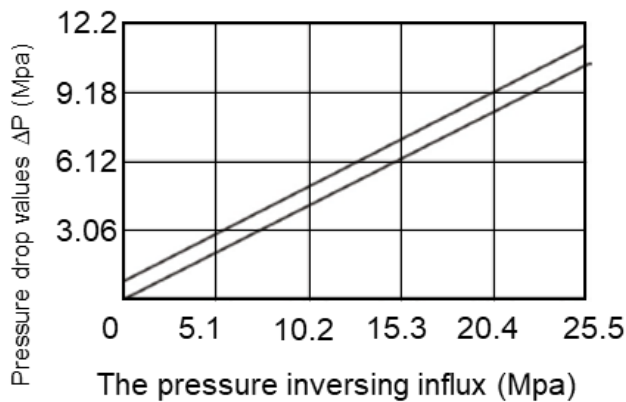
Pressure drop characteristics of inverting free flow



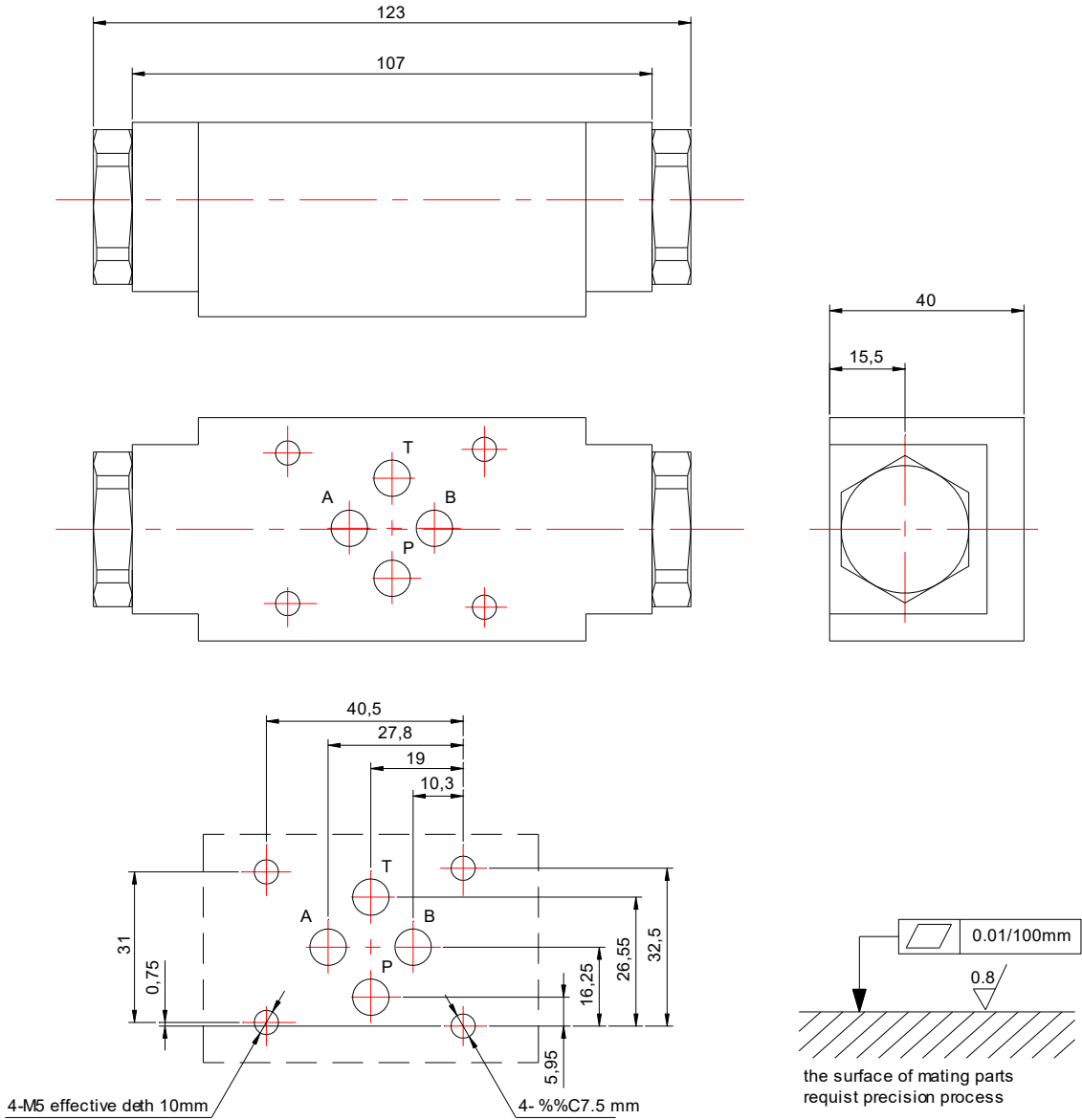
Pressure drop characteristics



The characteristics of the minimum pilot pressure



Installation Dimension NG6



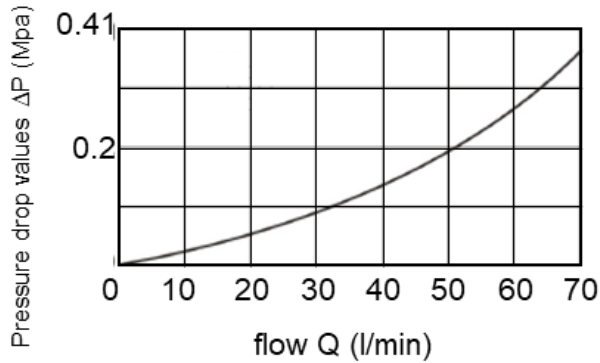
Ordering codes (most frequently used)

Article code	Description	Remark
QC100001	QC-6-P-2.5-AB-F-X	
QC100002	QC-6-P-2.5-A-F-X	
QS100001	Sealing set QC size 6	

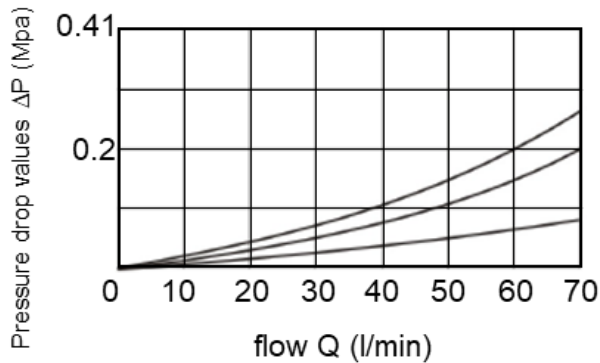
Technical data NG10

Size	The maximum pressure [Bar]	The maximum flow [l/min]	Weight [kg]
10	210	70	2.8

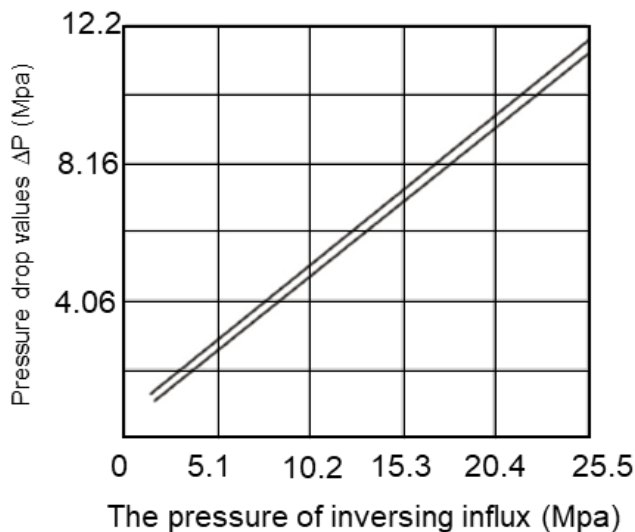
Pressure drop characteristics of inverting free flow



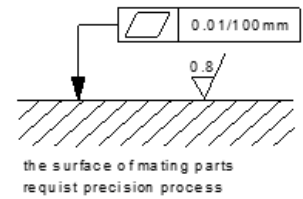
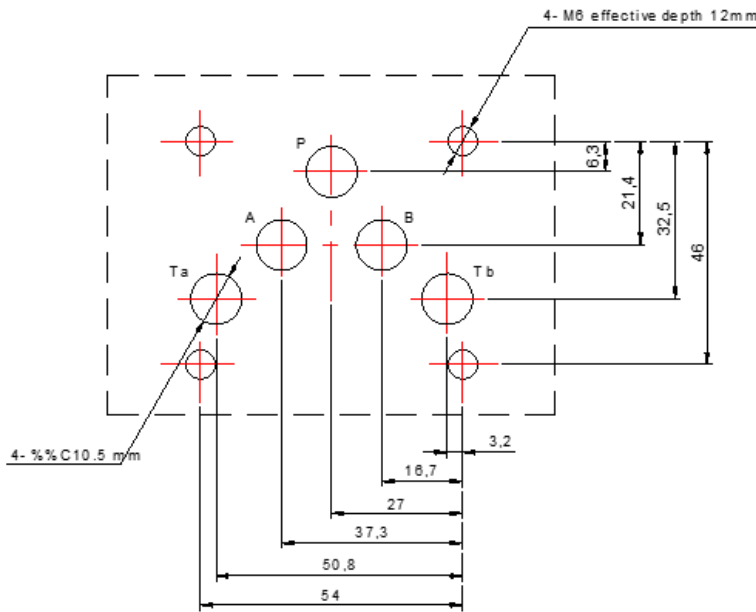
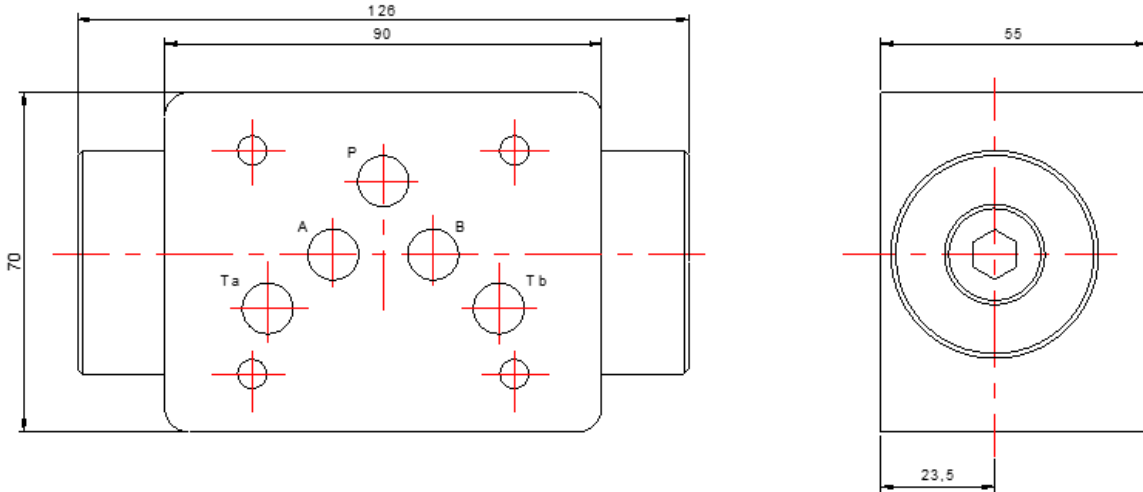
Pressure drop characteristics



The characteristics of the minimum pilot pressure



Installation Dimension NG10



Ordering codes (most frequently used)

Article code	Description	Remark
QC100003	QC-10-P-2.5-AB-F-X	
QC100004	QC-10-P-2.5-A-F-X	
QS100002	Sealing set QC size 10	